

LONDON BOROUGH OF HAVERING

Office for National Statistics
live births data (2013-2016)

2017

by Locality and
by Ward

By the
London Borough of Havering
Public Health Service

Information requested	Live births by ward by month
Request from	Children's services
Purpose	Live births figures will feed local models to determine childcare sufficiency and school place planning
Date completed	November 2017
Analysis by	Tom Morgan (Principal Public Health Analyst)

Summary

The number of live births in local authorities needs to be known in order to plan appropriate provision of maternity and health visiting services, nursery sufficiency and school places.

In Havering there were 3,400 live births in 2016. The highest number of live births occurred in the ward of *Brooklands* (320, 9%) and the North locality (1,260, 37%). The lowest number of live births occurred in the ward of *Upminster* (110, 3%) and the South locality (910, 27%).

The number of live births in Havering has increased by 4.4% per year since 2013; in England and Wales the rate has decreased slightly (-0.1%).

Annual live births

The number of live births in each ward per year are shown by Locality in Figure 1, Figure 2 and Figure 3.

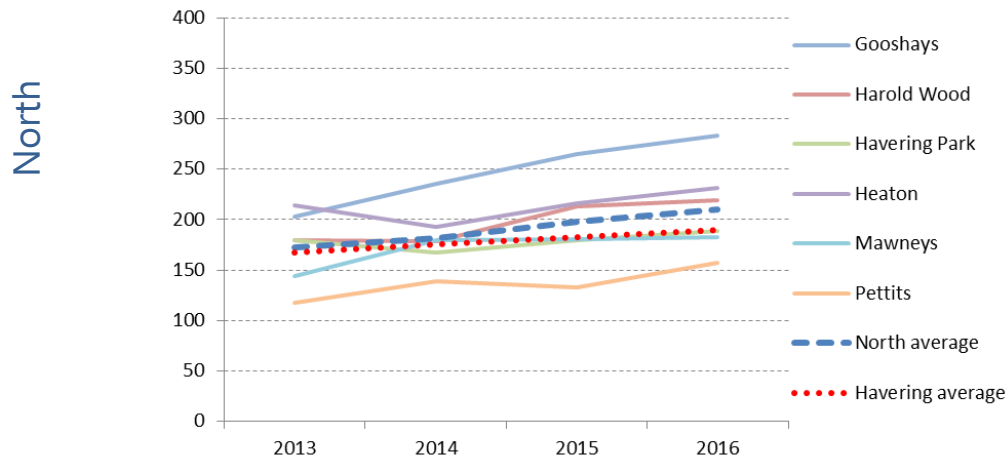


Figure 1

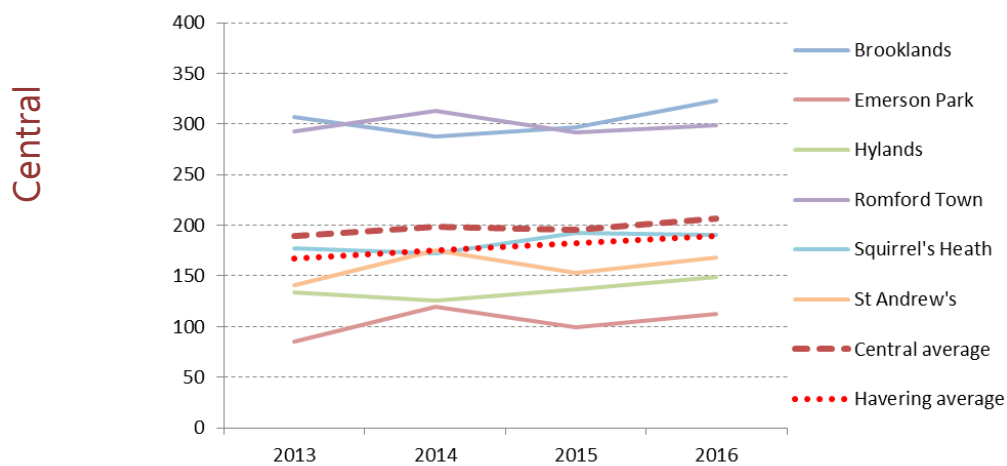


Figure 2

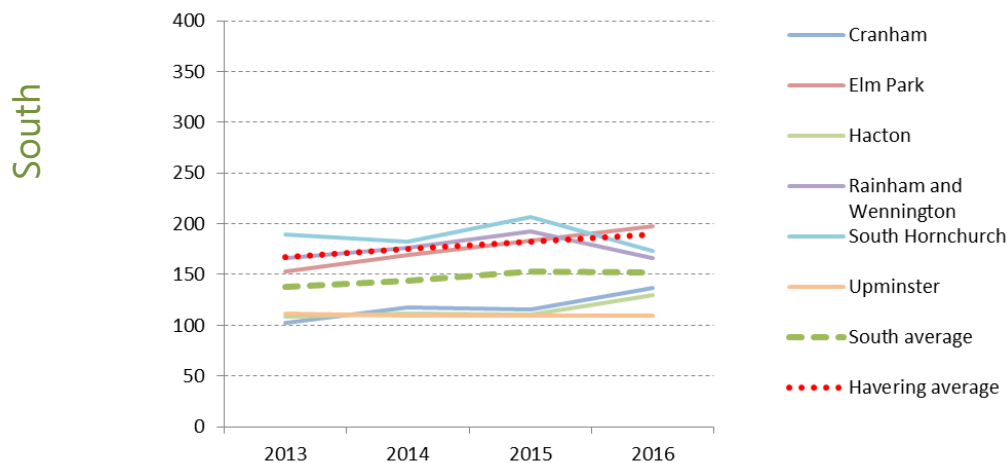


Figure 3

Quarterly live births

The number of live births in each Locality per quarter are shown in Figure 4.

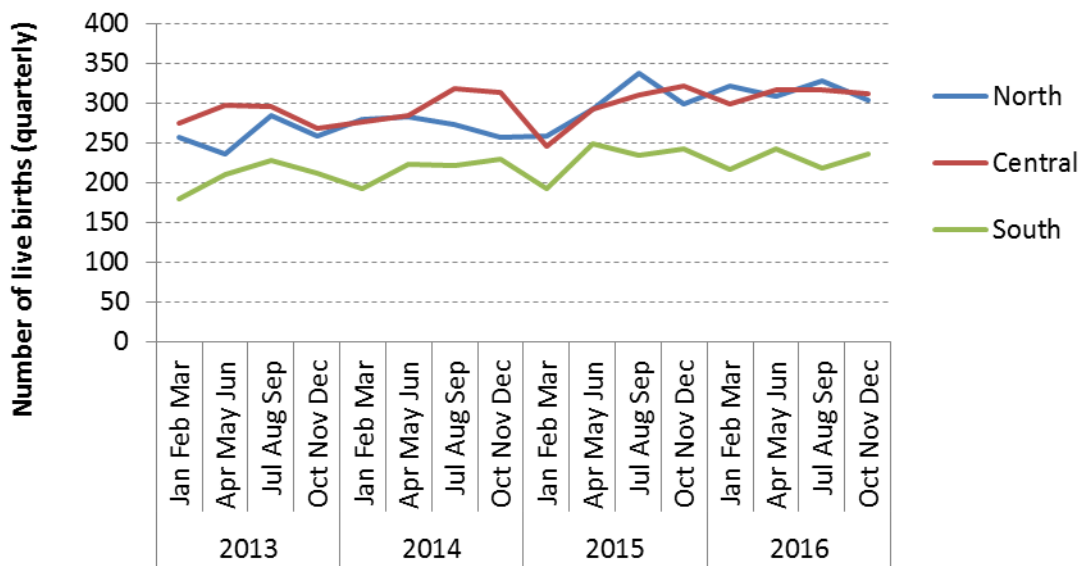


Figure 4

Conclusion

The wards with the greatest number of live births in 2016 were *Brooklands* (310), *Romford Town* (300) and *Gooshays* (270). The wards with the largest annual increases in recent years were *Gooshays* (13%), *Harold Wood* (11%) and *Elm Park* (9%). The wards with the fewest births in 2016 were *Upminster* (110) and *Emerson Park* (110). The wards with the smallest annual increases (-1%) in recent years were *Upminster* and *Romford Town*.

The number of live births in Havering is rising at a faster rate than the average for England and Wales. Within Havering, *Gooshays* and *Harold Wood* have together contributed one third (+50) of the overall recent increase in the number of live births.

Appendix

Table 1 shows the number of live births by ward (grouped by Locality) per quarter (grouped by calendar year).

Table 1

Birth		North						Central						South					
Year	Quarter	Gooshays	Harold Wood	Havering Park	Heaton	Mawneys	Pettits	Brooklands	Emerson Park	Hylands	Romford Town	Squirrel's Heath	St Andrew's	Cranham	Elm Park	Hacton	Rainham and Wennington	South Hornchurch	Upminster
2013	q1	44	45	43	61	41	23	73	17	33	74	43	34	24	36	19	42	36	22
	q2	41	37	50	57	24	27	84	26	38	75	47	28	32	38	33	36	48	24
	q3	65	54	43	53	34	36	74	20	32	83	49	38	22	44	31	49	58	24
	q4	53	43	44	43	45	31	76	22	31	61	38	41	24	35	25	39	47	42
2014	q1	59	40	43	45	57	35	69	35	39	63	41	30	32	34	32	36	35	24
	q2	62	56	38	41	48	38	60	29	27	85	38	46	32	47	27	39	53	25
	q3	52	47	50	59	28	37	74	33	33	90	41	48	25	40	28	56	43	29
	q4	62	35	36	48	47	29	85	23	27	75	52	51	29	48	25	45	51	31
2015	q1	52	53	40	41	45	28	57	16	30	59	47	37	25	41	27	41	32	27
	q2	63	54	49	49	41	36	78	28	28	78	52	28	26	47	33	49	65	29
	q3	80	52	47	62	55	42	78	27	33	78	45	50	38	45	23	49	53	26
	q4	70	54	44	64	40	27	84	28	46	77	49	38	27	50	28	54	57	27
2016	q1	65	61	48	61	49	37	64	25	33	70	57	50	33	40	27	41	50	26
	q2	87	58	45	55	31	33	86	21	33	75	57	44	39	61	33	40	43	26
	q3	75	53	51	53	60	36	86	39	37	77	35	42	37	51	36	32	38	24
	q4	56	47	45	62	43	51	87	28	46	77	42	32	28	46	34	53	42	33

Table 2 shows the number of live births by Locality per quarter (grouped by calendar year).

Table 2

Year	Quarter	North	Central	South	<i>Havering</i>
2013	Jan Feb Mar	257	274	179	<i>710</i>
	Apr May Jun	236	298	211	<i>745</i>
	Jul Aug Sep	285	296	228	<i>809</i>
	Oct Nov Dec	259	269	212	<i>740</i>
2014	Jan Feb Mar	279	277	193	<i>749</i>
	Apr May Jun	283	285	223	<i>791</i>
	Jul Aug Sep	273	319	221	<i>813</i>
	Oct Nov Dec	257	313	229	<i>799</i>
2015	Jan Feb Mar	259	246	193	<i>698</i>
	Apr May Jun	292	292	249	<i>833</i>
	Jul Aug Sep	338	311	234	<i>883</i>
	Oct Nov Dec	299	322	243	<i>864</i>
2016	Jan Feb Mar	321	299	217	<i>837</i>
	Apr May Jun	309	316	242	<i>867</i>
	Jul Aug Sep	328	316	218	<i>862</i>
	Oct Nov Dec	304	312	236	<i>852</i>

Table 3 shows the number of live births by Locality per year.

Table 3

Year	North	Central	South	<i>Havering</i>
2013	1,037	1,137	830	<i>3,004</i>
2014	1,092	1,194	866	<i>3,152</i>
2015	1,188	1,171	919	<i>3,278</i>
2016	1,262	1,243	913	<i>3,418</i>