

This is Havering 2018

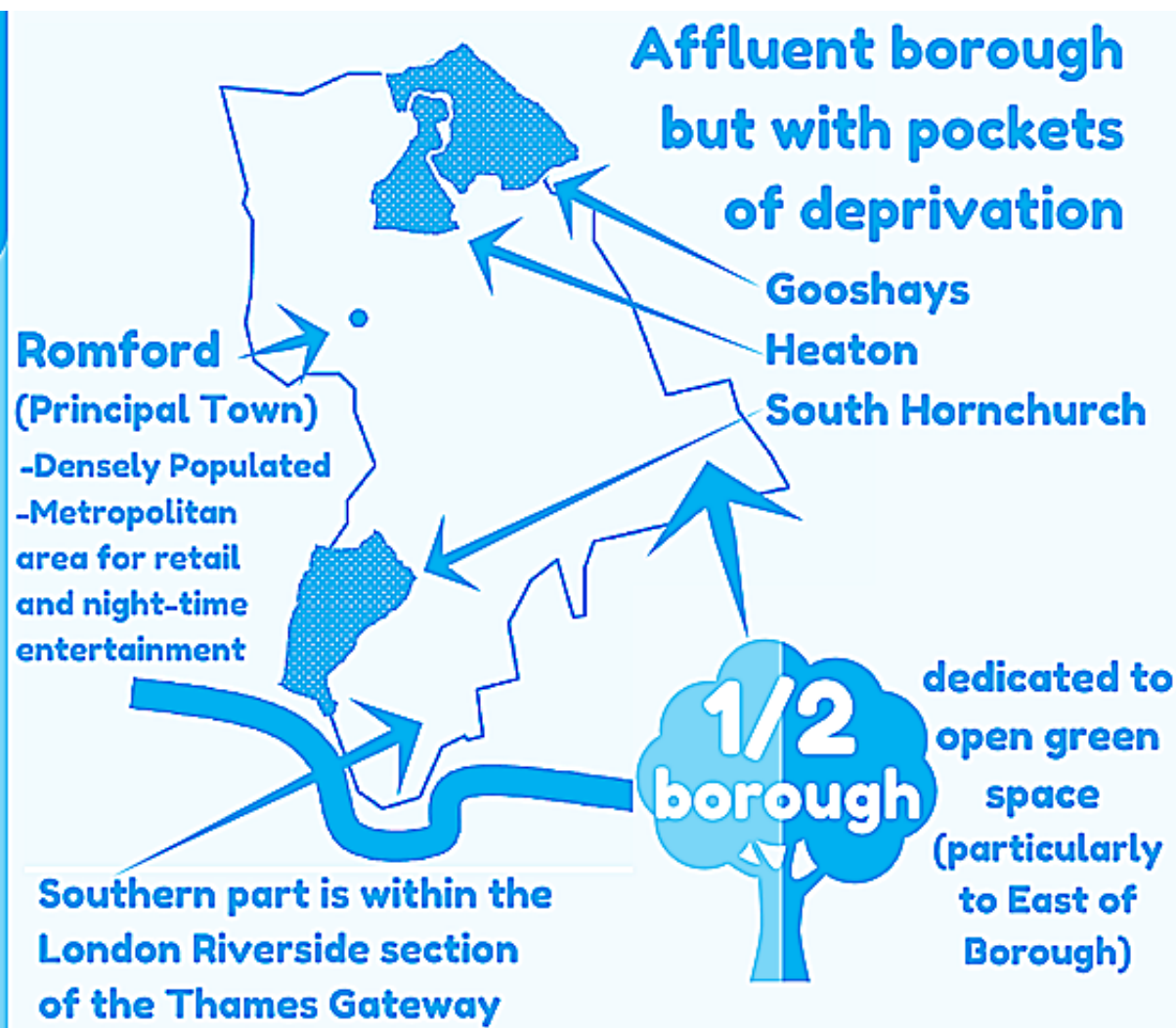
An infographic summary of This is Havering: a demographic and socio-economic profile

Main Documents available here: www.haveringdata.net/custom/jsna.htm

GEOGRAPHY

3rd largest borough in London

43 miles²
(Size)

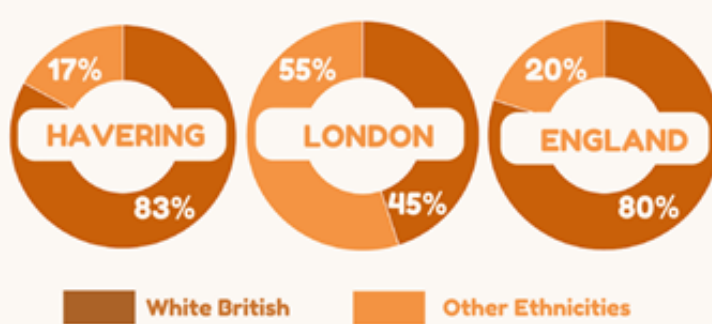


POPULATION

Oldest borough in London

40 years
(Median Age)

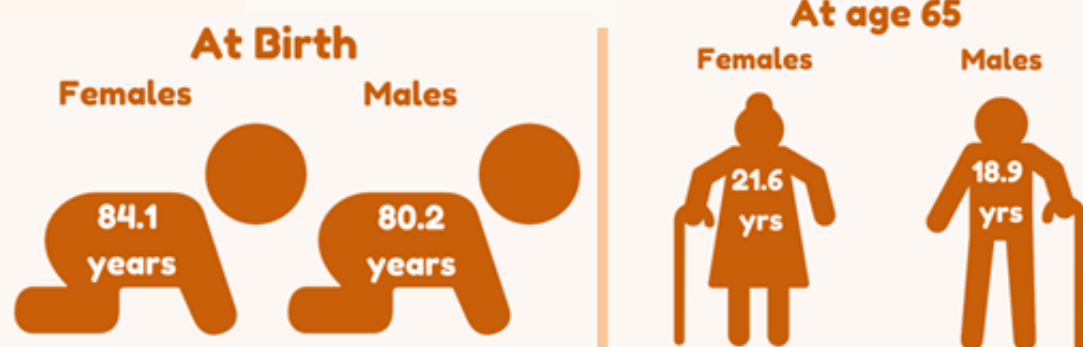
Ethnicity



Country of Birth



Life Expectancy



Following a net population loss of 6.3% from 1983 to 2002, the population of Havering has increased year on year from 2002, with a 13.7% increase from 2002 to 2017



HOUSEHOLD

Highest proportion of one-person households occupied by persons aged 65 years

48%
(One-person Households)



Household Composition mainly composed of

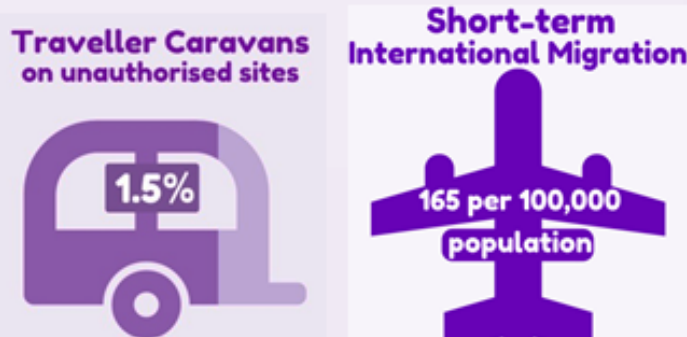


Lone Parent Households



52% Households with Adults working

16% Households with NO Adults working



32% of elderly population

live in one person households

ECONOMY

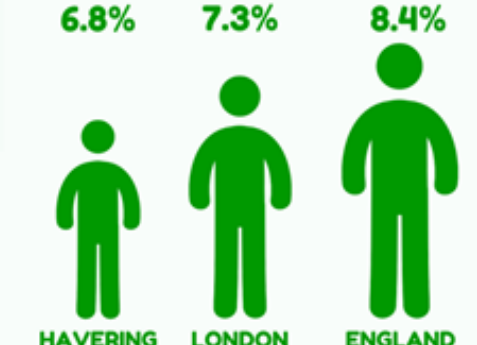
11th highest proportion of working-age residents in employment in London

78% (Employment)

Employment Rate (Overall)



Out of Work Benefits



Car Ownership



Child Poverty

30-33% of children live in poverty*



Children in income-deprived households



Average gross income per household



HAVERING

J S N A



Havering
LONDON BOROUGH